

DS-9632NXI-I16R/VPro I/VPro Series NVR with AcuSeek



- H.265+/H.265/H.264+/H.264 video formats
- Intelligent analytics based on Guanlan Large-Scale AI Models
- Up to 32-ch AcuSeek and AcuSearch function
- Up to 8-ch facial recognition for face picture
- Up to 32-ch IP camera inputs
- Up to 32-ch 1080p decoding capability
- Up to 8-ch IP speakers can be connected

▪ Function

Compression and Recording

- H.265+ compression effectively reduces the storage space by up to 75%
- Full channel IP cameras connection
- Compatible to third-party network cameras

HD Video Output

- Provide independent HDMI and VGA outputs
- HDMI video output at up to 4K resolution

Storage and Playback

- Up to 16 SATA interfaces for HDD connection
- 16-ch synchronous playback

Smart & POS Function

- Support multiple VCA (Video Content Analytics) events
- Integrates SmartSearch, AcuSearch, and AcuSeek functions for optimized playback efficiency
- POS triggered recording and alarm, POS information overlay on live view and playback

Network & Ethernet Access

- 2 self-adaptive 10/100/1000 Mbps Ethernet interfaces
- Hik-Connect & DDNS (Dynamic Domain Name System) for easy network management

▪ Specification

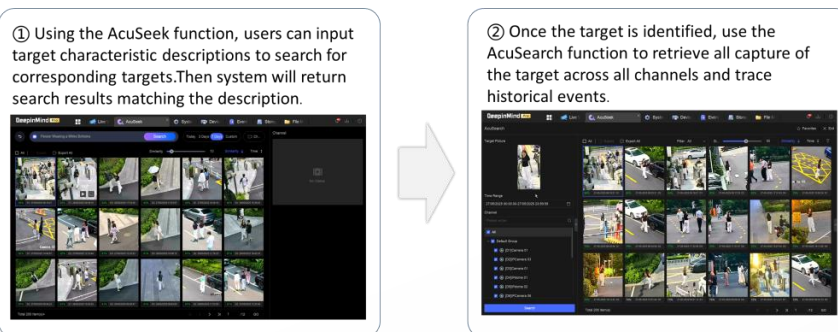
Intelligent Analytics	
AI by NVR	Facial recognition
AI by NVR and Camera	Facial recognition, perimeter protection, video structuralization, AcuSearch, motion detection 2.0, ANPR, people counting, AcuSeek
Engine	2 engines. 1 is for face picture and AcuSearch. 1 is for AcuSeek
Facial Recognition	
Face Picture Library	Up to 16 face picture libraries, with up to 50,000 face pictures in total (each picture ≤ 4 MB, total capacity ≤ 1 GB)
Face Picture Comparison	8-ch
Facial Detection and Analytics	Face picture comparison, human face capture, face picture search
Facial Detection and Analytics Performance	4-ch human face capture (HD network camera, 4-ch 2MP, 2-ch 4MP, 1-ch 8MP, H.264/H.265)
AcuSearch	
Performance	If the cameras support Hikvision AcuSense Technology and have enabled AcuSearch function, the NVR supports AcuSearch in all channels, capable of modeling 300,000 targets/day.
AcuSeek	
Performance	If the cameras support Hikvision AcuSense Technology and have enabled AcuSearch function, the NVR supports AcuSeek in all channels, capable of modeling 300,000 targets/day.
Search Language	English, French, Italian, German, Polish, Portuguese, Thai, Russian, Arabic, Turkish, Spanish, Dutch, Romanian, Czech, Swedish, Croatian, Latvian, Ukrainian, Hungarian, Danish, Japanese, Korean, Vietnamese, Indonesian, Brazilian Portuguese, Traditional Chinese
ANPR	
By Camera	<p>All channels</p> <p>Support Countries & Regions:</p> <ol style="list-style-type: none"> 1. Myanmar, Philippines, Indonesia, Vietnam, Pakistan, New Zealand, Australia, Sri Lanka, Singapore, Malaysia 2. Turkey, Croatia, Slovakia, Czech Republic, Bulgaria, Macedonia, Hungary, Greece, Poland, France, Netherlands, Switzerland, Spain, The United Kingdom, Ireland, Germany, Italy, Austria, Palestine, Latvia, Lithuania, Estonia, Belgium, Luxembourg, Ukraine, Uzbekistan, Kazakhstan, Mongolia, Moldova, Kyrgyzstan, Azerbaijan, Georgia, Armenia, Albania, Kosovo, Belarus, Cyprus, Denmark, Finland, Malta, Portugal, Romania, Slovenia, Sweden, Israel, Bosnia and Herzegovina, Turkmenistan, Montenegro, Serbia, Tajikistan, Iceland, Liechtenstein 3. Argentina, Brazil, Chile, Colombia, Peru, Ecuador, Paraguay, Uruguay, Salvador, Bolivia, Canada, Algeria, Mexico, Panama, Costa Rica, Nigeria, Kenya, Mauritius, Tanzania, Cote d'Ivoire, South Africa, Tunisia, Sierra Leone, Zambia, Ghana, Zimbabwe, Uganda, Angola, Ethiopia, Republic of Trinidad and Tobago, Dominica, Guatemala, Senegal, Algeria, Cameroon 4. Qatar, Kuwait, Oman, Jordan, Lebanon, Iraq, United Arab Emirates, Saudi Arabia, Bahrain, Egypt, Libya

Vehicle Attributes	Plate number, license plate color, license plate type
Plate Attributes	Vehicle brand, vehicle color, vehicle type
Video and Audio	
IP Video Input	32-ch
Incoming Bandwidth	384 Mbps
Outgoing Bandwidth	256 Mbps
Video Output Mode	HDMI1/VGA1 simultaneous output, HDMI2/VGA2 simultaneous output
CVBS Output	NA
Audio Output	2-ch, RCA (Linear, 1 K Ω)
Two-Way Audio	1-ch, RCA (2.0 Vp-p, 1 K Ω)
HDMI 1 Output	4K (3840 \times 2160) /30Hz , 2K (2560 \times 1440) /60Hz , 1080P (1920 \times 1080) /60Hz , 720P (1280 \times 720) /60Hz
HDMI 2 Output	1080P (1920 \times 1080) /60Hz , 720P (1280 \times 720) /60Hz
VGA 1 Output	1080P (1920 \times 1080) /60Hz , 720P (1280 \times 720) /60Hz
VGA 2 Output	1080P (1920 \times 1080) /60Hz , 720P (1280 \times 720) /60Hz
Decoding	
Decoding Format	H.265+, H.265, H.264+, H.264
Recording Resolution	32 MP/24 MP/16 MP/12 MP/8 MP/6 MP/5 MP/4 MP/3 MP/1080p/UXGA/720p/VGA/4CIF/DCIF/2CIF/CIF/QCIF *: Support resolution width/height less than 8192 pixels, total not exceeding 32MP. *: The NVR supports up to 4-ch of >12MP IP video input.
Synchronous playback	16-ch
Live View Window Division	1/2/4/6/8/9/16/25/36
Aux Port Window Division	1/2/4/6/8/9/16/25/36
Decoding Capability	Enable AI by NVR: 20-ch@1080p (30 fps) Disable AI by NVR: 32-ch@1080p (30 fps)
Dual-Stream Recording	Support
Audio Compression	G.711ulaw/G.711alaw/G.722/G.726/AAC/MP2L2/PCM
Stream Type	Video, Video & Audio
Network	
Network Interface	2, RJ-45 10/100/1000 Mbps self-adaptive Ethernet interface
Remote Connection	128
Network Protocol	TCP/IP, DHCP, IPv4, IPv6, DNS, DDNS, NTP, RTSP, SADP, SMTP, SNMP, NFS, iSCSI, ISUP, UPnP™, HTTP, HTTPS, ONVIF, OTAP
API	ONVIF (profile S/G); SDK; ISAPI
Compatible Browser	IE11, Chrome V57, Firefox V52, Safari V12, Edge V89, or above version
RAID	
RAID Type	RAID0, RAID1, RAID5, RAID6, RAID10 The RAID function and AI functions cannot be enabled simultaneously.
Auxiliary Interface	
Serial Interface	1 RS-232, 1 RS-485 (full-duplex)
SATA	16 SATA interfaces, Hot swap.
Capacity	Up to 20 TB capacity for each disk
eSATA	1 eSATA interface

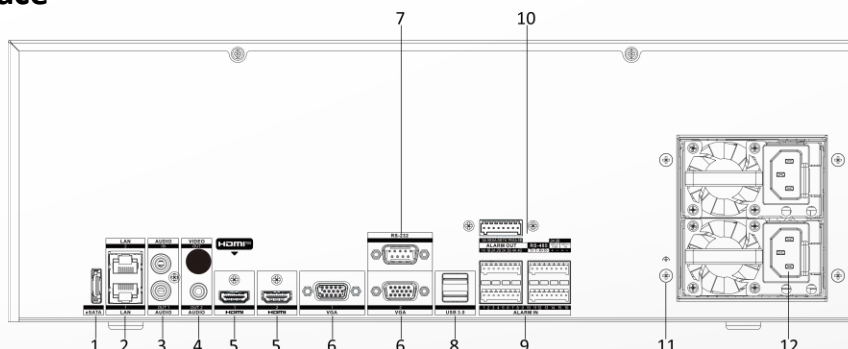
Alarm In/Out	16/9
USB Interface	Front panel: 2× USB 2.0; Rear panel: 2 × USB 3.0
Ctrl 12V	Controllable 12 VDC, 1 A power output for external alarm device; The power will be turned on when the alarm output is triggered. *: The Ctrl 12V power is controlled by alarm output 9.
DC 12V	12 VDC, 1 A power output
General	
Power Supply	100 to 240 VAC, 50 to 60 Hz, redundant power supply
GUI Language	English, Russian, Bulgarian, Hungarian, Greek, German, Italian, Czech, Slovak, French, Polish, Dutch, Portuguese, Spanish, Romanian, Turkish, Japanese, Danish, Swedish Language, Norwegian, Finnish, Korean, Traditional Chinese, Thai, Estonian, Vietnamese, Croatian, Slovenian, Serbian, Latvian, Lithuanian, Uzbek, Kazakh, Arabic, Ukrainian, Kyrgyz, Brazilian Portuguese, Indonesian, Hebrew
Consumption	≤ 50 W (without HDD)
Working Temperature	-10 °C to 55 °C (14 °F to 131 °F)
Working Humidity	10% to 90%
Chassis	3U chassis
Dimension (W × D × H)	442 x 498 x 146 mm (17.40" x 19.59" x 5.75")
Weight	≤ 12.5 kg (without HDD, 27.6 lb.)
Certification	
Obtained Certification	CE, CB, REACH, WEEE, UKCA, RCM, IC, LOA
CE	EN 55032, EN 61000-3-2, EN 61000-3-3, EN 55035

▪ Typical Application

Typical Application



▪ Physical Interface



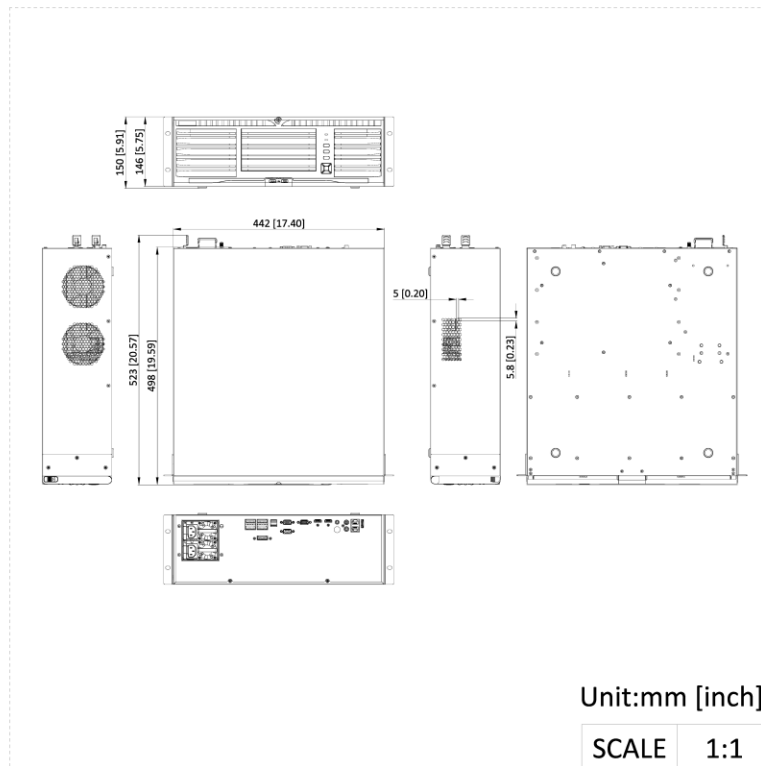
No.	Description	No.	Description
1	eSATA interface	7	RS-232 interface

2	LAN1/LAN2 interface	8	USB 3.0 interface
3	AUDIO IN/OUT	9	ALARM IN
4	AUDIO/VIDEO OUT	10	ALARM OUT, RS-485, Ctrl 12 V and DC 12 V
5	HDMI1/HDMI2 interface	11	GND
6	VGA1/VGA2 Interface	12	100 to 240 VAC power supply

▪ **Available Model**

DS-9632NXI-I16R/VPro(STD)

▪ **Dimension**



See Far, Go Further



www.hikvision.com
support@hikvision.com

